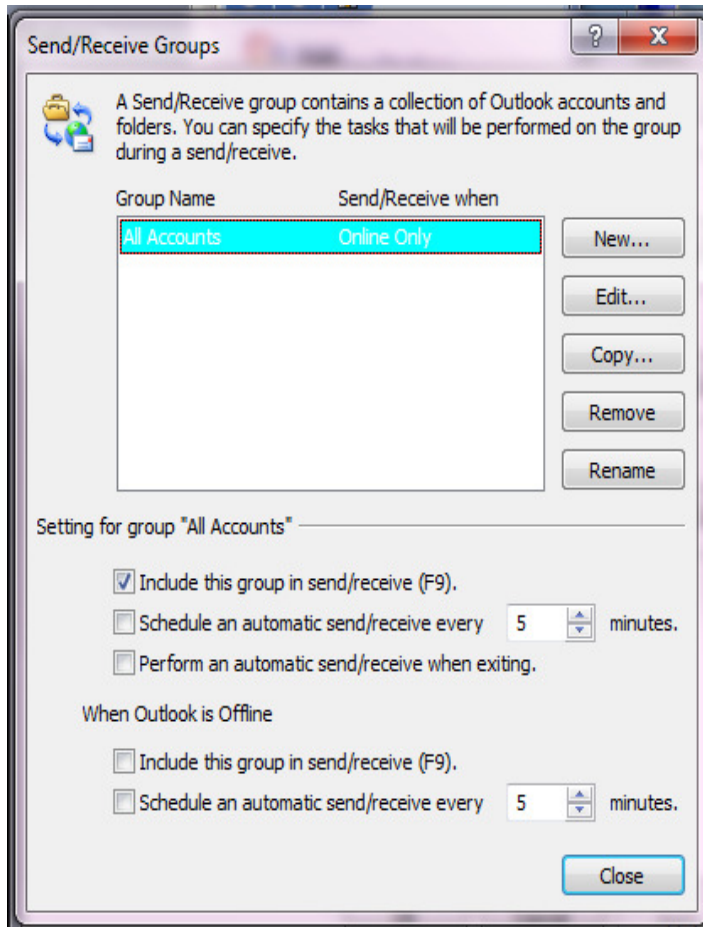


## GUIDELINES FOR USING MAILWASHER PRO 2012

*Mailwasher Pro for Windows is a mail cleaning application you run **prior** to accessing your email from Outlook. See detailed guidelines below.*



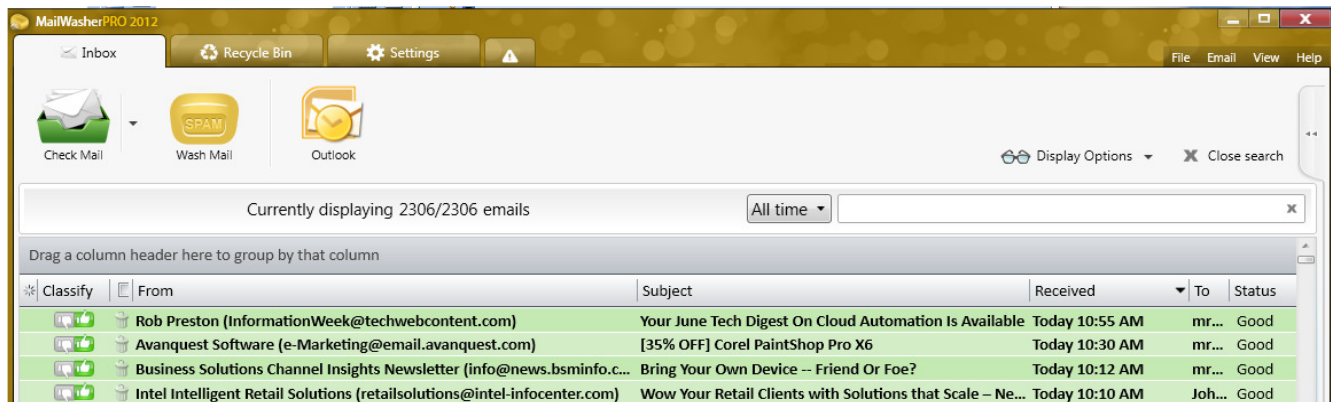
Mailwasher downloads and support pages here:  
<http://fta.firetrust.com/index.cgi?id=mrjgc>

Smartphone compatible  
**Android, iPhone**

For support contact:

John Compton  
Avenue 18 Computer  
310 829-3129  
[www.avenue18.com](http://www.avenue18.com)

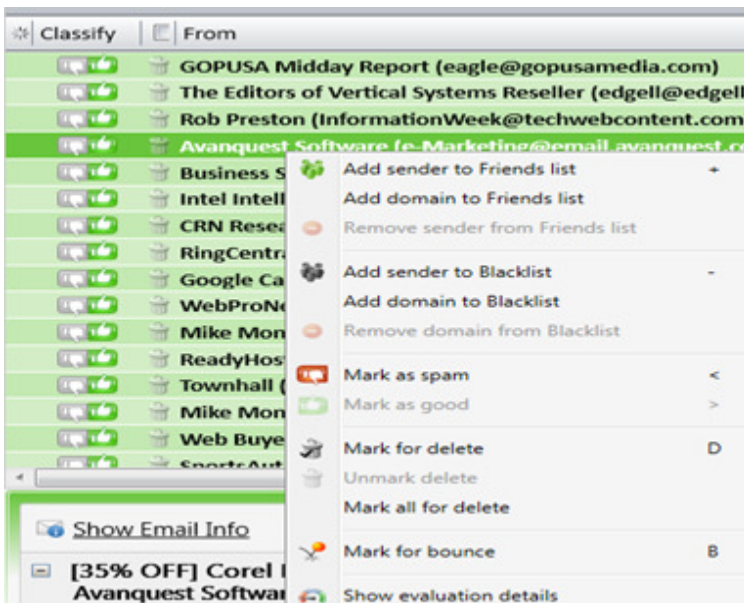
Disable the Auto Send/Receive in your Email application ie... Outlook or Thunderbird.  
Send/Receive **\*\*must\*\*** be disabled for Mailwasher Pro to work right!!



Thumbs Up or Down? A safe preview allows you to review and block spam effectively before downloading to your email program.

## MAILWASHER PRO USAGE TIPS:

- 1- Browse new mail in Mailwasher first, using the Tag/Classify feature to mark new Spam.
- 2- Keep your filters updated when you spot new, frequently used key spam words.
- 3- There will always be “unique” spam. Update your filters and block domains as practical.
- 4- For really Awful spam choose Mark for BOUNCE from menu (below left) as well as tag as spam.
- 5- Wash often, and make sure filters have Auto-Delete selected, as per the Filter Actions tab.
- 6- Keep Mailwasher and Outlook open at the same time. Occasionally something will sneak past Mailwasher, no big deal, simply Right Click mark as Spam in Outlook, then flag it in Mailwasher.
- 7- As you edit and maintain your filters and black lists the system will get increasingly accurate.
- 8- Smart Phones: I don't mind some spam on the phone since I know that it will get zapped with Mailwasher Pro later on. Phones don't store mail locally like laptops and desktops anyway.
- 9- Be sure to Disable “Auto check email” in Outlook or other email app as practical:  
To do this in Outlook select Options from the main File or Tools menu – depending on version of Outlook. Turn the periodic Email checking completely OFF! If automatic checking is left on then Mailwasher may not be able to clean all email. You can use the F5 key to check Outlook mail.



### Mailwasher Filters aka Bad Word List

#### **Here are some suggested spam filter words:**

nigeria,sierra leone, cialis, viagra, droz, dr.oz, justpfizer, diploma, casino, palace,beloved,oprah,cupid (etc. etc. no spaces needed!)

*It's OK to have multiple Filters. If your system bogs down under a heavy load you can adjust the program's performance under Settings, General, Performance.*

### MAILWASHER PRO Setup Tips

1. In General Mail Settings, set Periodic check to 5 or 6 minutes as preferred. Under Washing Mail check the “Launch after Washmail” to open your email app right after washing away spam.
2. Click Settings, Spam Tools, then Filters and add a Filter containing offensive terms etc. Select Action Tab and choose “Auto-Delete this Mail”.
3. Test Mailwasher! Manually tag more offending emails using Right Click and select “Mark as spam” or click up/dn thumbs to classify spam emails.
4. Click Washmail again. REPEAT the review of emails listed in Mailwasher and finish tagging & washing spam.
5. Once everything is clean open up your regular email program and click Send/receive. All spam should have been filtered out thanks to prefiltering and washing with Mailwasher Pro.
6. Use Mailwasher to browse new mail throughout the day and repeat the Tag, wash & then hit send/receive in Outlook or your preferred email application.